



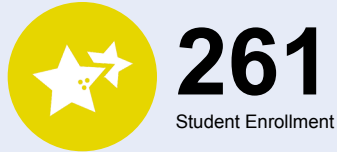
# OREGON AT-A-GLANCE SCHOOL PROFILE

## Rigler Elementary School

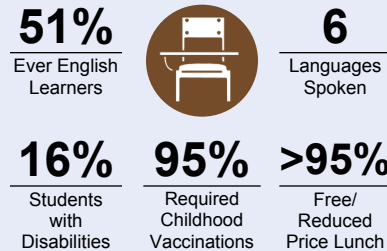
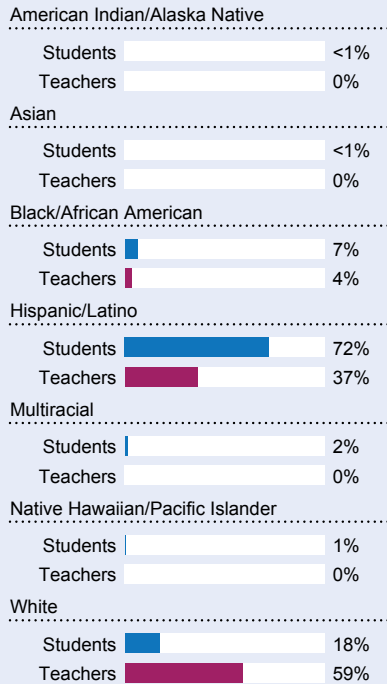
PRINCIPAL: Chris Silvas | GRADES: K-5 | 5401 NE Prescott St, Portland 97218 | 503-916-6451



### Students We Serve



### DEMOGRAPHICS



\*<10 students or data unavailable

### Special Note

The At-A-Glance School and District profiles tell a story about Oregon's schools and districts. The story is harder to tell this year as the COVID-19 pandemic significantly impacted our schools and the data we collect. As a result, statewide assessment and attendance data cannot be compared to prior years and are not shown here. We have included links to our website where you can view the 2020-21 statewide assessment and attendance data and read a detailed description of how these data were impacted. We're thankful for your partnership as we focus on care, connection and the creation of safe, inclusive and supportive learning environments.

### Academic Success

#### ENGLISH LANGUAGE ARTS

Students meeting state grade-level expectations.

For 2020-21 English Language Arts data please visit:

[www.oregon.gov/ode/schools-and-districts/reportcards/reportcards/Pages/Statewide-Assessment-Results-2021.aspx](http://www.oregon.gov/ode/schools-and-districts/reportcards/reportcards/Pages/Statewide-Assessment-Results-2021.aspx)

### School Environment

#### REGULAR ATTENDERS

Students who attended more than 90% of their enrolled school days.

For 2020-21 Regular Attenders data please visit:

[www.oregon.gov/ode/schools-and-districts/reportcards/reportcards/Pages/Regular-Attenders-2021.aspx](http://www.oregon.gov/ode/schools-and-districts/reportcards/reportcards/Pages/Regular-Attenders-2021.aspx)

#### MATHEMATICS

Students meeting state grade-level expectations.

For 2020-21 Mathematics data please visit:

[www.oregon.gov/ode/schools-and-districts/reportcards/reportcards/Pages/Statewide-Assessment-Results-2021.aspx](http://www.oregon.gov/ode/schools-and-districts/reportcards/reportcards/Pages/Statewide-Assessment-Results-2021.aspx)

### Academic Progress

#### INDIVIDUAL STUDENT PROGRESS

Year-to-year progress in English language arts and mathematics.

Data not available in 2020-21

#### SCIENCE

Students meeting state grade-level expectations.

For 2020-21 Science data please visit:

[www.oregon.gov/ode/schools-and-districts/reportcards/reportcards/Pages/Statewide-Assessment-Results-2021.aspx](http://www.oregon.gov/ode/schools-and-districts/reportcards/reportcards/Pages/Statewide-Assessment-Results-2021.aspx)

### School Goals

Our focus is on literacy and math fluency, with the aim of refining our instructional strategies and providing all students with the skills they need to be ready to succeed in college and careers. We strive to provide a welcoming environment and equitable opportunities for students of all races, genders, and home languages. We encourage you to contact us with any questions, concerns, or information that will help us ensure success for your students.

### State Goals

The Oregon Department of Education is partnering with school districts and local communities to ensure a 90% on-time, four year graduation rate by 2025. To progress toward this goal, the state will prioritize efforts to improve attendance, provide a well-rounded education, invest in implementing culturally responsive practices, and promote continuous improvement to close opportunity and achievement gaps for historically and currently underserved students.

### Safe & Welcoming Environment

We work hard to make our school a place where all students and families feel welcome and included. We celebrate our community's diversity and we honor this diversity in our learning activities. We understand how important it is to keep our students feeling safe, both physically and emotionally, when they are with us.



# OREGON AT-A-GLANCE SCHOOL PROFILE CONTINUED

## Rigler Elementary School



### Outcomes

#### Our Staff (rounded FTE)



21

Teachers



4

Educational assistants



3

Counselors/ Psychologists



66%

Average teacher retention rate



59%

% of licensed teachers with more than 3 years of experience



No

Same principal in the last 3 years

	REGULAR ATTENDERS	ENGLISH LANGUAGE ARTS	MATHEMATICS
American Indian/Alaska Native			
Asian			
Black/African American			
Hispanic/Latino			
Multiracial			
Native Hawaiian/Pacific Islander			
White			
Free/Reduced Price Lunch			
Ever English Learner			
Students with Disabilities			
Migrant			
Homeless			
Talented and Gifted			
Female			
Male			
Non-Binary			

#### About Our School

##### BULLYING, HARASSMENT, AND SAFETY POLICIES

Portland Public Schools has created policies to help our schools provide safe environments for every student. This includes teaching students and staff about bullying and harassment, and providing methods to report and respond to any of these incidents. We have a PPS threat assessment team to help address reports of safety concerns. We also support the district-wide implementation of Positive Behavioral Interventions and Supports (PBIS), and Restorative Justice practices through our Multi-tiered System of Supports (MTSS) department.

##### EXTRACURRICULAR ACTIVITIES

Our school offers a variety of extracurricular activities. Check our website for details about specific activities.

##### PARENT ENGAGEMENT

Our school offers several meetings each year where we invite families to attend. The meetings are to discover what your children are learning at school, to see examples of their good work, and to learn ways that you can help them succeed at school. We will inform you of these school events and celebrations through our newsletters and other media. Please check our website for details about these events.

##### COMMUNITY ENGAGEMENT

We appreciate our community neighbors and want them to feel welcome to join us in supporting the success of our students. Please contact us if you and your community organization are interested in providing support, and we will be happy to talk with you about options.